

The background of the slide is a stylized, aerial view of a city. The buildings are represented as 3D blocks in various shades of green and teal. A network of streets and a river are visible, with yellow lines tracing paths through the urban landscape. A grid pattern is overlaid on the city, suggesting a data-driven or systematic approach. The overall color palette is dominated by greens and blues, creating a clean, modern aesthetic.

# Heute die Energiesysteme von Morgen planen

Franziska Steidle-Sailer, CEO

symphony

# Die Energiesystemplanung wird komplexer

Areal | Quartier | Industrieanlage

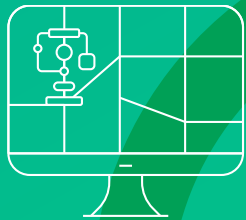
- ✓ Welche Energiequellen?
- ✓ Welche Technologien?
- ✓ In welcher Dimensionierung?
- ✓ CO<sub>2</sub> Emissionen (Scope 1-3)?
- ✓ Wie teuer? Investitionsfahrplan



# Symphony Plattform

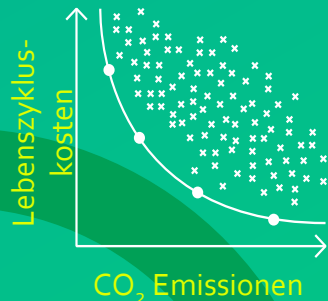
Die Komplexität der neuen Energielandschaft ganzheitlich angehen und robuste Investitionsentscheidungen treffen.

01 Entwicklung eines digitalen Energie-Zwillings



02 Tausende von möglichen Lösungen simulieren & vergleichen

 Symphony Algorithmen



03 Das optimale Energiesystem ermitteln

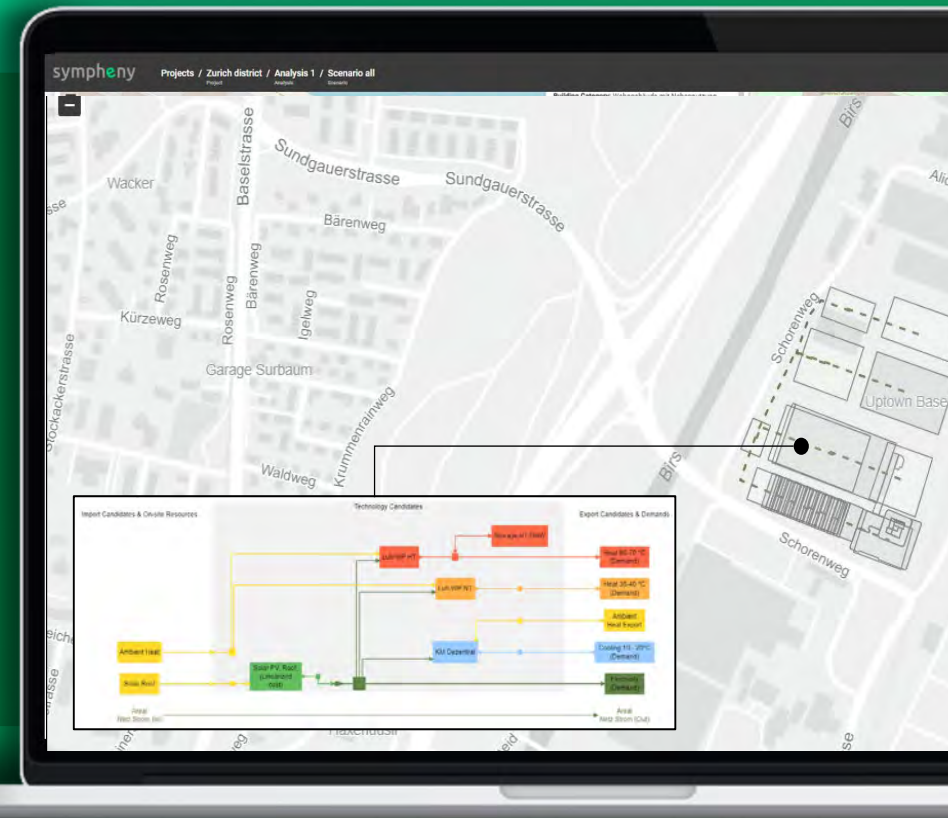
04 Entscheidungsfindung

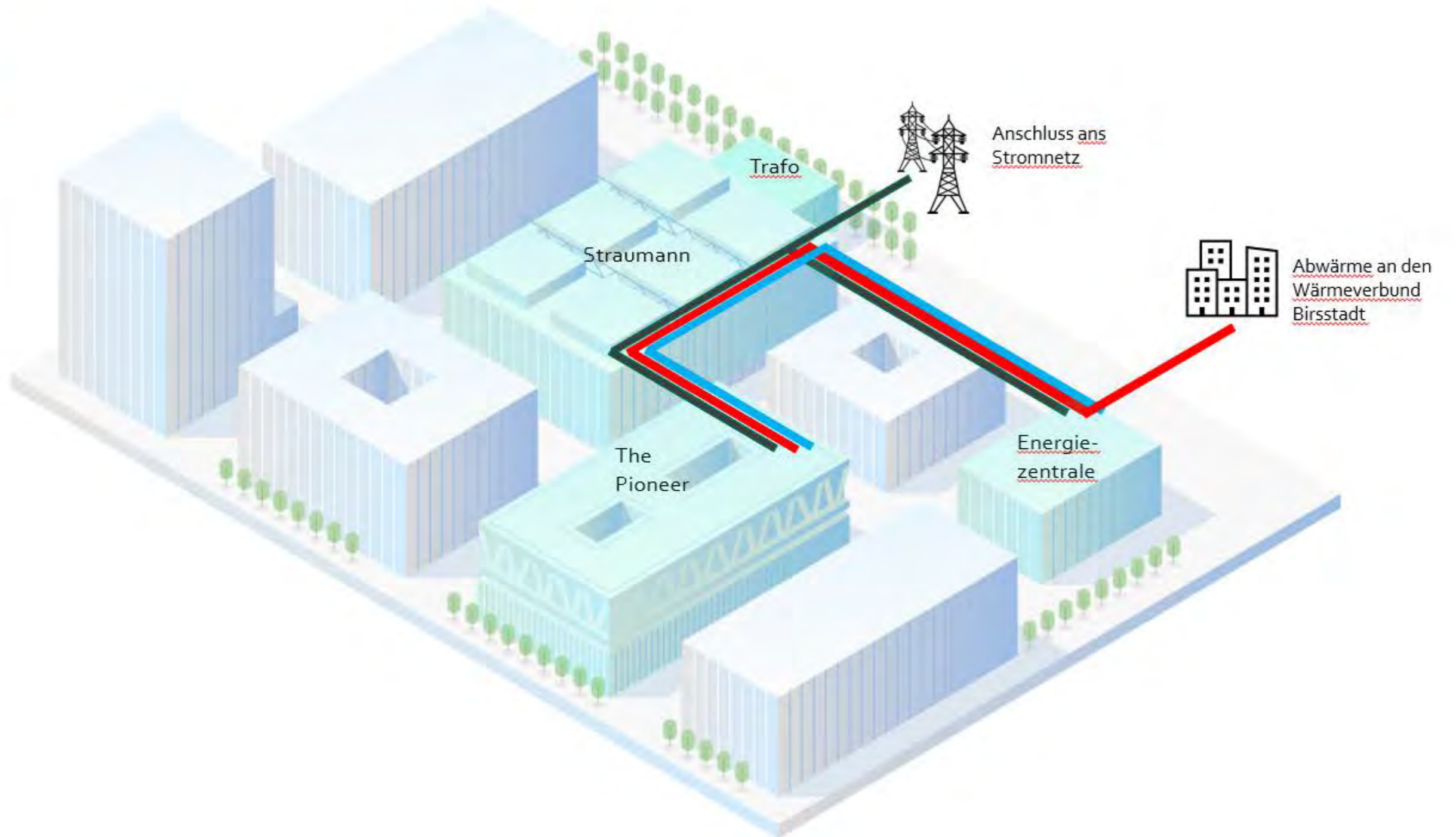


- ✓ Areale
- ✓ Quartiere
- ✓ Industrie



- ✓ Neubau
- ✓ Sanierungen





# Heute die Energiesysteme von Morgen planen.

Franziska Steidle  
franziska.steidle@sympheny.com

